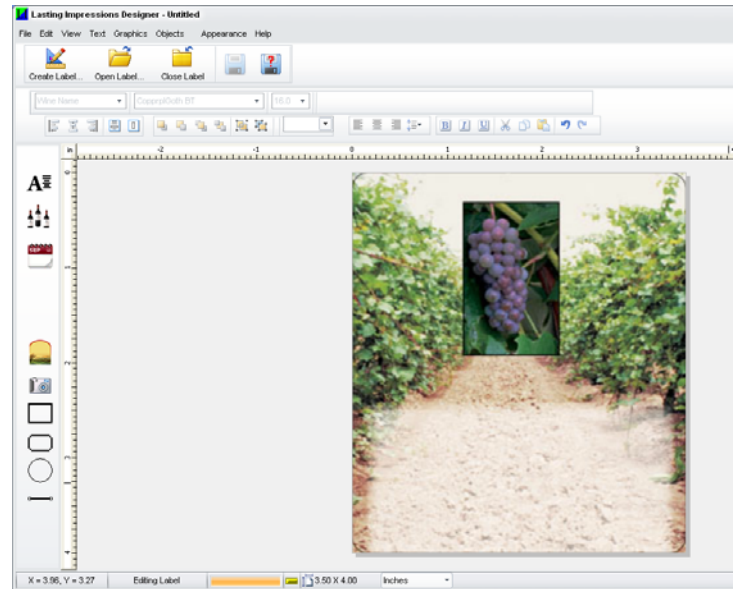
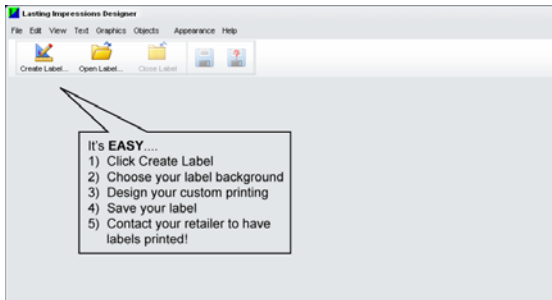





Lasting Impressions Designer Edition - Quick Start Guide


Easy steps to creating your own beautiful custom labels


Instructions are shown on the opening screen



1. Click  the **Create Label** icon.
2. Click on the image of the label you wish to use for your background. Please note we may not carry all of the available designs.
3. Click the insert text icon  to "Enter Your Text" and then click on the label background you selected. Double-click on the text box that appears and enter your text. Once you have entered your text, click anywhere on the label background and sizing handles will appear around the text. You can now customize your text by selecting a font style, resize your text, move, or rotate it.
 - o **Font style** – With the sizing handles active, select a font style from the drop-down menu at the top of the screen. *Tip – Click on the B, I or U at the top of the screen for special effects*
 - o **Resize text** – With the sizing handles active, either type a point size from the drop-down menu at the top of the screen, or left click on a sizing handle and drag to make the text box bigger or smaller.
 - o **Move text box** – Click and drag the text box to move it
 - o **Rotate text** – Click, hold and drag on the green sizing handle dot to rotate text or select a specific angle by clicking on the rotate text drop-down menu at the top of the screen.

Click  to add a **Wine Name**, and then click on your label background. Now click on the wine name drop-down menu at the top of the screen to select a wine type. *Tip – Double click on the wine text box you created and enter your wine type if it is not listed. You can save the name for future use.*

Click  to add a **Bottling Date**, and then click on your label background.

4. Click  at the top of the screen to save your label design. *Tip – The default location for saving your designs is **My Documents/MacDay Label Systems/Customers***
5. **Print your labels** – Talk to your retailer about how to transfer your saved label files to them for printing.

For help on the **advanced features** listed below, print the *Advanced Features One Page Guide* found in the Help menu

- o Fun text styles
- o Alignment buttons
- o Copy and Paste
- o Shapes and lines
- o Inserting clip art and graphics, Grouping and layering, Preferences